

CH PRODUCTS OEM DIVISION

original equipment manufacturer

TRACKBALLS

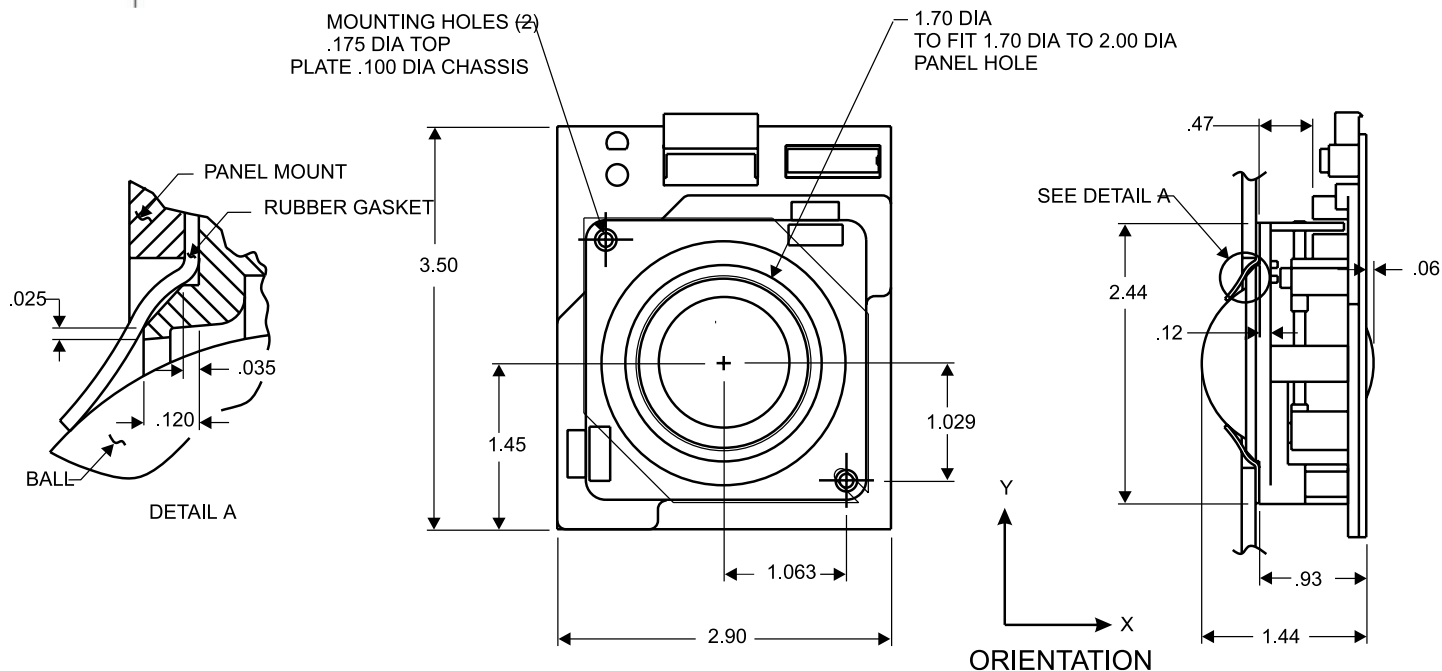
A trackball from CH Products is essential when precision, control and accuracy are critical. Constructed of the highest quality components available, our versatile Trackball line can accommodate a variety of application needs. Whether it's integrated into control panels and kiosks, or stand-alone on a desktop, CH Products trackballs are the best choice for durability and precision. Encased five-point ball bearing support and stainless steel shafts in the desktop model allow for smooth and effortless accuracy. Each of our trackballs come with a multitude of standard features and an assortment of options, including Universal Serial Bus (USB) support.



TRACKBALLS

LP150

Designed for integration into industrial keyboards and control panels, the LP150 panel mount trackball is ideal for limited space applications. The LP150 requires only one inch of below panel depth.



STANDARD FEATURES

- Reliable non-contacting optical encoders
- Four distinct button inputs
- Compact low profile design
- Click and Click Lock inputs
- Easy axis rotation
- Polished stainless steel shafts
- Standard AMP connectors
- Easy installation
- Encased stainless steel bearings
- Protocol support:
 - PS/2 for PC's
 - Serial (5V and RS232)
 - USB for PC and Macintosh
 - PS/2 for UNIX Workstations
 - Raw Quadrature Waveforms
 - Sun Microsystems

OPTIONAL FEATURES

- Rubber gasket (IP65 Compliant)
- 2 or 3 button strips
- Connector Cable

PHYSICAL SPECIFICATIONS

- Ball: 1.5in. Thermoset phenolic (black)
- Housing: Glass filled nylon (black)
- Rotation: 360°
- Tracking Force: 10 grams
- Weight: 133 grams
- Dimensions: 2.9in.W x 3.5in. D x 0.98in. H
- Mounting position: Horizontal to 90°
- Encased stainless steel bearings
- Temperature:
 - Storage: -32°C to +75°C
 - Operating: -15°C to +70°C
- Mechanical MTBF: 5,000,000 180° rotations with 6 ounces of vertical force

TYPICAL APPLICATIONS

- Automated machine controls
- Motorized microscopes & vision systems
- Industrial & scientific instrumentation
- Medical imaging systems
- Test & measurement equipment
- Video editing & production equipment
- Kiosks

ELECTRICAL SPECIFICATIONS

PS/2

- Input: +5V @ 30mA max
- Output: CMOS/TTL, Serial

Microsoft

- Input: DTR @ 15mA max
- RTS @ 15mA max
- Output: RS-232, Serial

USB

- Input: 4V-5.25V @ 25mA max

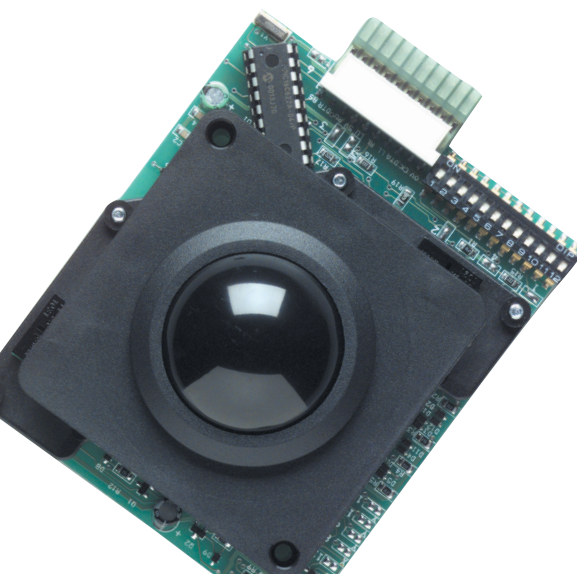
Quadrature

- Input: +5V @ 30mA max
- Output: Quadrature Waveforms

Sun Workstation

- Input: +5V @ 30mA max
- Output: CMOS/TTL, Serial

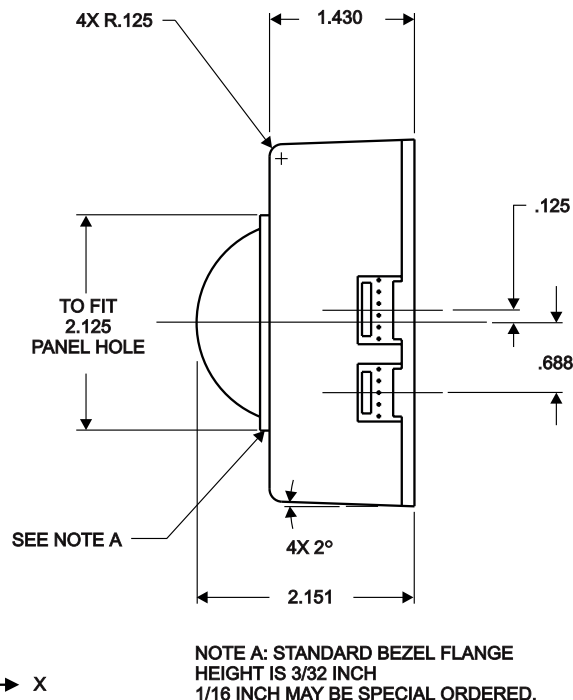
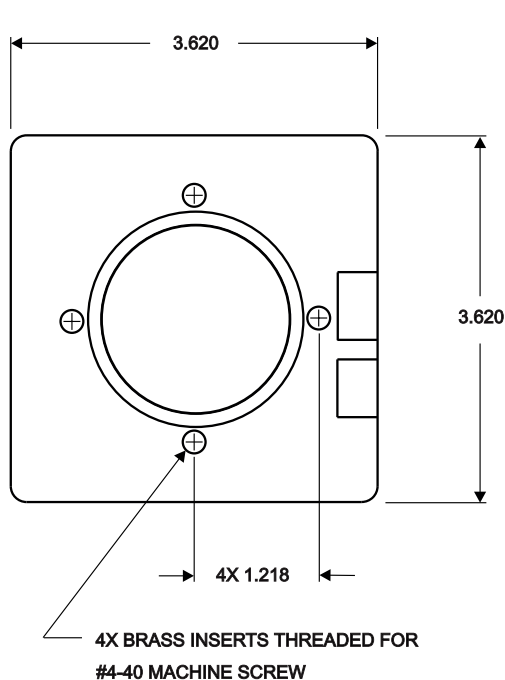
Electrical MTBF: 100,000 operational(power on) hours



excellent craftsmanship

P200

The P200 is designed for applications when durability and precision are paramount. The P200 requires only 1.43 in. below panel depth and can easily be incorporated into any panel design.



STANDARD FEATURES

- Reliable non-contacting optical encoders
- Four distinct button inputs
- Click and Click Lock inputs
- Easy axis rotation
- Zero drift
- Polished stainless steel shafts
- Standard AMP connectors
- Easy installation
- Encased stainless steel bearings
- Protocol Support:
 - PS/2 for PC's
 - Serial (5V and RS232)
 - USB for PC and Macintosh
 - PS/2 for UNIX Workstations
 - Raw Quadrature Waveforms
 - Sun Microsystems

PHYSICAL SPECIFICATIONS

Ball: 2.0 in. Thermoset phenolic (black)
 Housing: High impact plastic (black)
 Rotation: 360°
 Tracking force: 10 grams
 Weight: 281 grams
 Dimensions: 3.62in. W x 3.62in. D x 1.43in. H
 Mounting position: Horizontal to 90°
 Temperature:
 Storage: -32°C to +75°C
 Operating: -15°C to +70°C
 Mechanical MTBF: 5,000,000
 180° rotation with
 6 ounces of vertical force

TYPICAL APPLICATIONS

- Robotic positioning controls
- Medical diagnostic equipment
- Automated machine controls
- Video editing & production equipment
- Navigation controls
- Medical imaging systems
- Industrial & scientific instrumentation
- Motorized microscopes and vision systems

ELECTRICAL SPECIFICATIONS

PS/2

Input: +5V @30mA Max
 Output: CMOS/TTL, Serial

Microsoft

Input: DTR @ 15mA max
 RTS @ 15mA max
 Output: RS-232, Serial

USB

Input: 4V – 5.35V @ 25mA max
 Output: USB

Quadrature

Input: +5V @ 30mA max
 Output: Quadrature Waveforms

Sun Workstation

Input: +5V @ 30 mA max
 Output: CMOS/TTL, Serial
 Electrical MTBF: 100,000 operational (power)

OPTIONAL FEATURES

- 2 or 3 button strips
- Connector Cable



DT225

From day one, the DT225 was designed to work in a desktop environment. By utilizing smooth stainless steel shafts, five point encased ball bearings support, and a large 2.25in. thermoset phenolic ball, the DT225 provides accurate yet effortless precision.

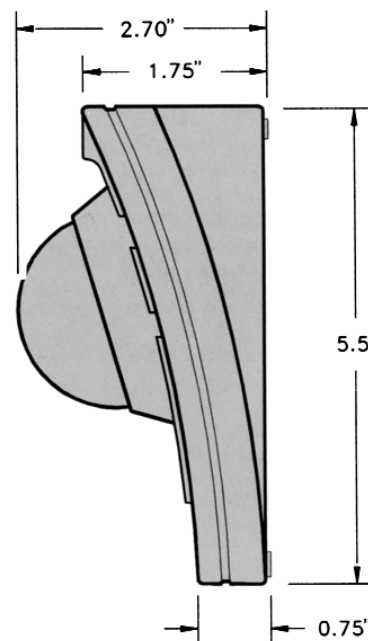
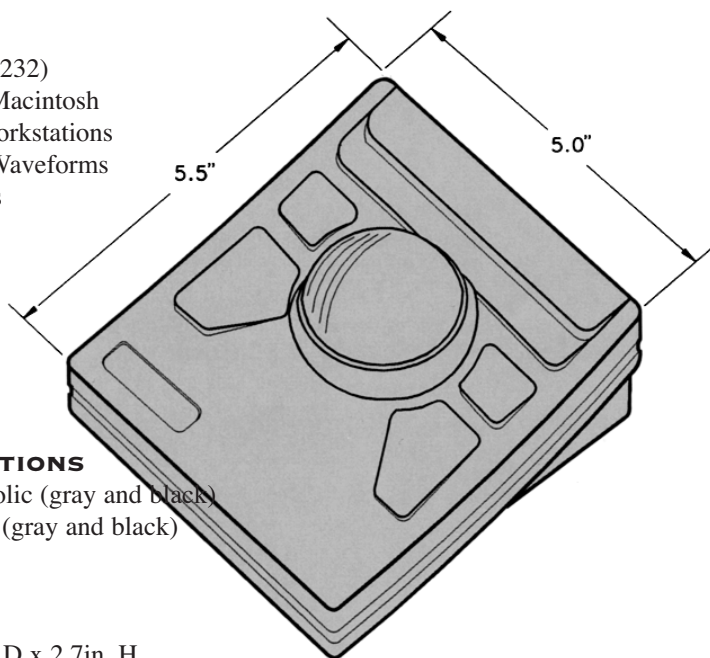
STANDARD FEATURES

- Reliable non-contacting optical encoders
- Four distinct button inputs
- Click and Click Lock inputs
- Zero drift
- Polished stainless steel shafts
- Easy installation
- Encased stainless steel bearings
- Protocol support:
 - PS/2 for PC's
 - Serial (5V and RS232)
 - USB for PC and Macintosh
 - PS/2 for UNIX Workstations
 - Raw Quadrature Waveforms
 - Sun Microsystems

TYPICAL APPLICATIONS

- CAD/ CAM/ CAE
- Process Control
- Video editing equipment
- Imaging and computer graphics
- Non-destructive test and measurement
- Medical diagnostic equipment
- Automated machine controls

OPTIONAL FEATURES -none-



PHYSICAL SPECIFICATIONS

Ball: 2.25in. Thermoset phenolic (gray and black)
 Housing: High impact plastic (gray and black)
 Rotation: 360°
 Tracking force: 11 grams
 Weight: 460 grams
 Dimensions: 5.0in.W x 5.5in. D x 2.7in. H
 FCC Approved: Class B, subpart J of part 15
 Temperature
 Storage: -32°C to +75°C
 Operating: -15°C to +70°C
 Mechanical MTBF: 5,000,000 180° rotations
 with 6 ounces of vertical force

ELECTRICAL SPECIFICATIONS

PS/2

Input: +5V @ 30mA Max
 Output: CMOS/TTL, Serial

Microsoft

Input: DTR @ 15mA Max

RTS

Output: RS-232, Serial

USB

Input: 4V-5.25V @ 25mA Max
 Output: USB

Quadrature

Input: +5V @ 30mA Max
 Output: Quadrature Waveforms

Sun Workstation

Input: +5V @ 30mA Max
 Output: CMOS/TTL, Serial

Electrical MTBF: 100,000 operational (power on) hours



PART NUMBER CONFIGURATION & AVAILABILITY GUIDE

DESCRIPTION	KEY	FEATURE	FEATURE AVAILABILITY																				
Trackball Type	LP150 P200 DT225	1.50" Panel Mount Trackball 2.00" Panel Mount Trackball 2.25 Desktop Trackball	LP150							P200							DT225						
Protocol Format	1 2 3 5 6 7	Microsoft (2BTN Serial) Mouse Systems (3/4 BTN Serial) IBM PS/2 (2/3 BTN PS/2) Quadrature (BUS for DT225) Sun Workstation USB (Universal Serial BUS)	1	2	3	5	6	7		1	2	3	5	6	7		1	2	3	5	6	7	
Mounting Position	F N X	Level to 45° Level to 90° (See NOTE 2) Not Applicable	X	X	X	X	X	X	X	X	X	X	X	X	X								
PPR Resolution	10 20 30	LP150 P200 DT225 120 160 180 240 320 360 480 640 720	X	X	X		X	X	X	X	X	X		X	X	X	X	X	X	X	X	X	X
Power Requirement	V00 R00	5 Volt Regulated RS-232 (DTR and RTS)	X	X	X	X	X	X	X	X	X	X	X	X	X	X	X	X	X	X	X	X	X

NOTES:

- (1) X denotes availability of feature
- (2) Increases tracking force to 60 grams
- (3) PPR = Pulses per revolution (LP150/P200/DT225)
- (4) 3 button PS/2 for SGI, IBM, DEC or HP must be specified at time of order
- (5) Click lock on the LP150 and P200 requires a 3 button strip
- (6) The LP150 and P200 are both available with splash proof gaskets (P/N 900-030 and 900-029, respectively).
- (7) Example: P200-1F20R00 = P200 Panel mount trackball, Microsoft, Serial, level to 45 degrees, 320 PPR, RS-232.

TYPICAL APPLICATIONS

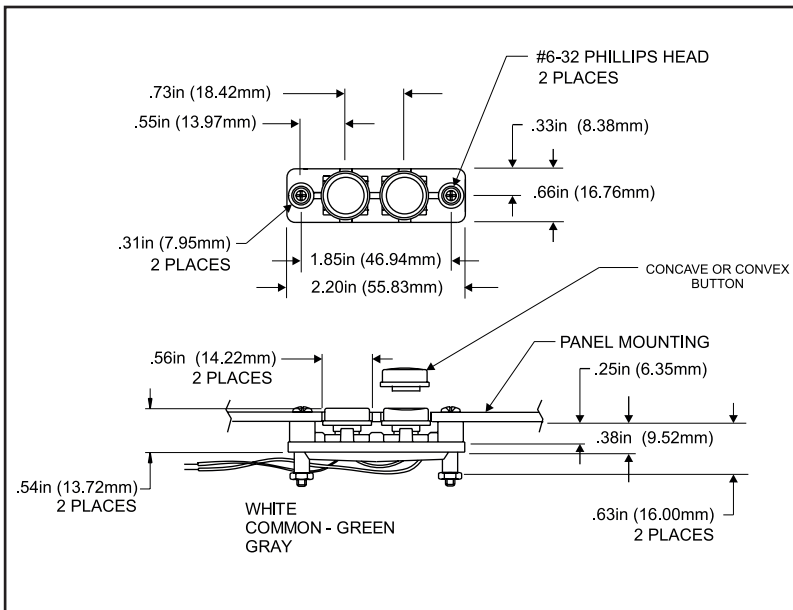
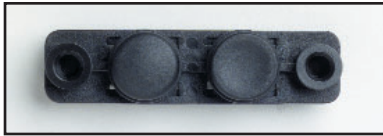


Product names used herein are for identification purposes only and may be trademarks of their respective companies.

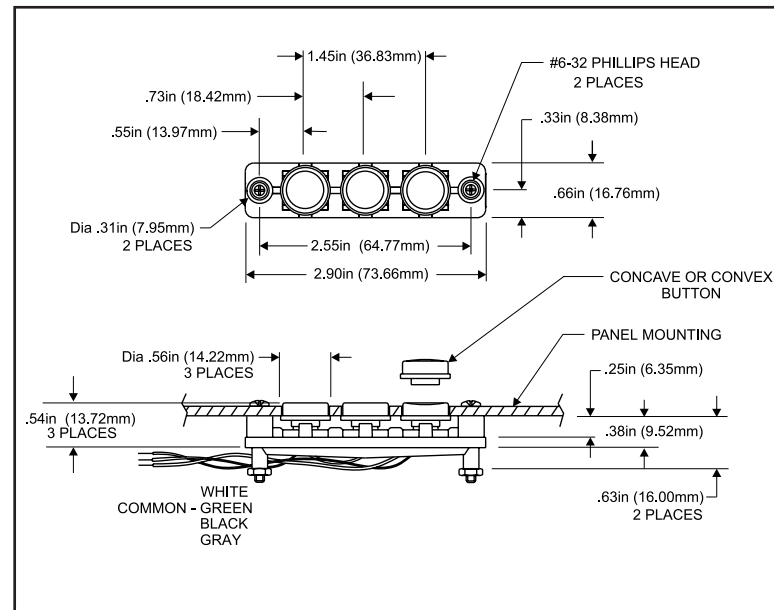
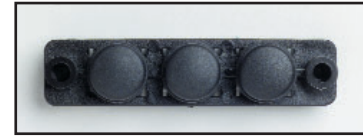
BUTTON STRIPS

Available in two or three button models, Button Strips from CH Products provide actuation functionality to your panel mount trackballs. Button Strips offer an easy integration solution for applications requiring two or three inline panel mounted switches. Each switch provides tactile and audible feedback utilizing the durability of a 5,000,000 life cycle switch rated at 500mA at 12VDC. The switch type is a normally open, single pole/single throw with momentary contact. Button caps are available in either black or gray with either a convex or concave design.

2-BUTTON STRIP



3-BUTTON STRIP



CABLES

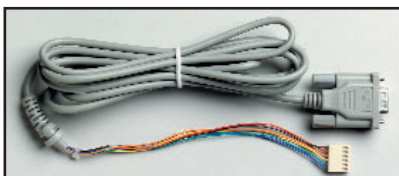
CH Products offers a variety of cables for different connectors and protocols.



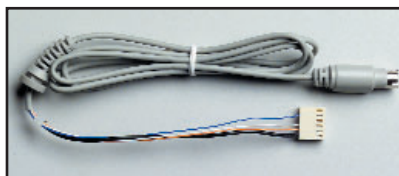
C1



C3



C4



C8

900-501C (C1) – 15 pin DB15 male connector, black 7' cable (10 conductors)

900-504P (C2) – 8 pin DB15 male connector, black 7' cable (7 conductors)

900-518 (C3) – 9 pin DB9 male connector, black 5' cable (9 conductors)

900-525G (C4) – DB9 female connector, gray 7' cable (5 conductors)

900-599GRY – Type A connector (5 conductors)

900-525B (C4B) – DB9 female connector, black 7' cable (5 conductors)

900-527A (C5) – 6 pin Mini Din (PS/2) connector, gray 7' cable (4 conductors)

900-529 (C7) – 10 pin Mini Din (BUS) connector, gray 6' cable (10 conductors/10 Amiga conductors)

900-531 (C8) – 8 pin Mini Din (SUN) connector, gray, 4' cable

900-599BLK – Type A connector (5 conductors)



CH PRODUCTS
970 PARK CENTER DRIVE
VISTA, CA 92083

A Women Owned Small Business

TELEPHONE
TEL (USA ONLY)
FAX
E-MAIL
WEBSITE

(760) 598-2518
1-800-240-7282
(760) 598-2524

OEMSALES@CHPRODUCTS.COM
HTTP://WWW.CHPRODUCTS.COM/OEM